

(4) SLOTS FOR .38 [9.6] DIA. MOUNTING HARDWARE

1/4-28 X .38 [9.6] DEEP  
(3) HOLES 120° APART  
ON A 6.00 [152.4] DIA.  
BOLT CIRCLE

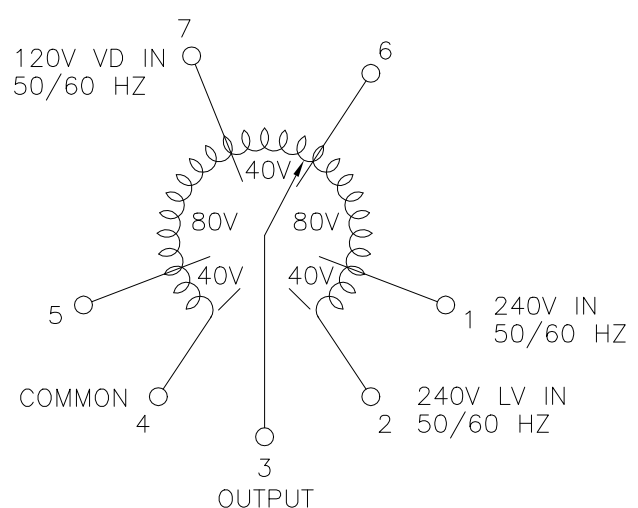
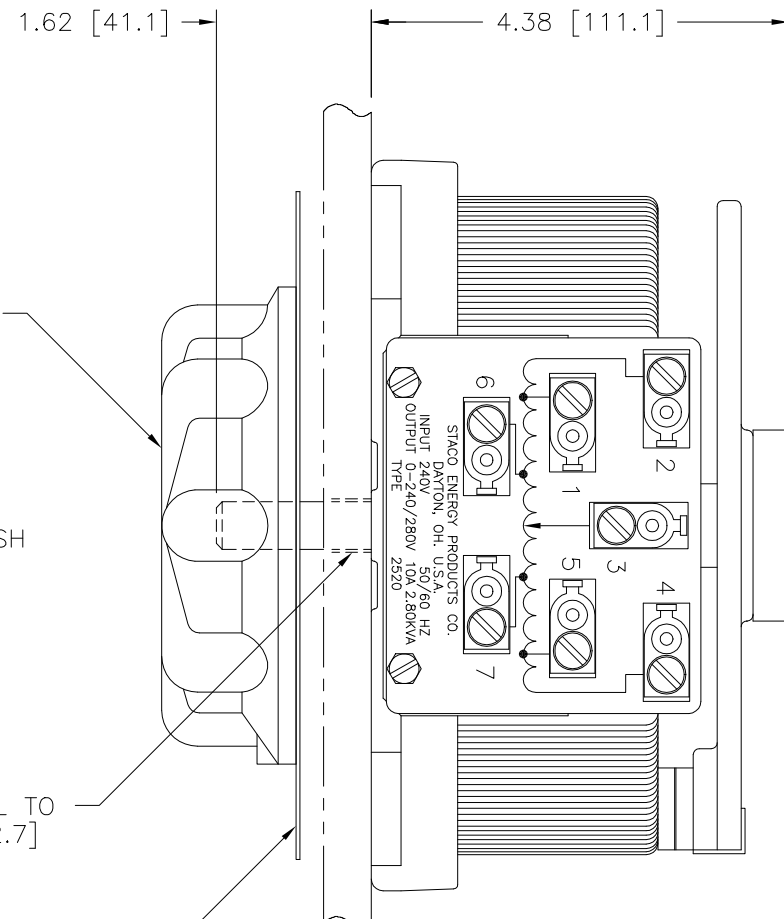
5.00 [127.0] DIA. KNOB

OPTIONAL TERMINALS FOR PUSH ON OR SOLDER CONNECTIONS (.032 X .250) [0.8 X 6.4]

HOLE IN PANEL TO CLEAR .50 [12.7] DIA. SHAFT

7.00 [177.8] DIA. DIAL PLATE GRADUATED (0-100)

.50 [12.7] MAX. PANEL THICKNESS



SCHEMATIC

AS VIEWED FROM BASE END  
FUSE RECOMENDED BUT NOT SUPPLIED

SPECIFICATIONS											
WIRING	INPUT		OUTPUT				SHAFT ROTATION TO INCREASE VOLTAGE	TERMINAL CONNECTIONS			
	VOLTS	HERTZ	VOLTS	CONSTANT CURRENT LOAD		CONSTANT IMPEDANCE LOAD		FOR INCREASING VOLTAGE AS VIEWED FROM BASE END			
				MAX. AMPS	MAX. KVA	MAX. AMPS		MAX. KVA	INPUT	JUMPER	OUTPUT
SINGLE PHASE	240	50/60	0-240	10	2.40	13	3.12	CW	2-4	---	4-3
			0-280	10	2.80	---	---	CCW	2-4	---	2-3
	120	50/60	0-280	10	1.20	---	---	CW	1-4	---	4-3
								CCW	2-5	---	2-3
---	---	---	---	---	---	---	CCW	7-4	---	4-3	
---	---	---	---	---	---	---	---	CCW	6-2	---	2-3

UNLESS OTHERWISE SPECIFIED, TOLERANCE IS #				UNITS		TITLE: SPEC. CONTROL DRAWING					
DECIMALS	Holes	ANGLES	DRAFT	IN [mm]		VARIABLE TRANSFORMER					
.XX	±.01	.002	1°	1-1/2"		TYPE: 2520					
MATERIAL:				ALL DIMENSIONS APPLY AFTER PLATING		SACO ENERGY PRODUCTS CO. DAYTON, OHIO U.S.A.					
DRAWN BY		DATE	FIRST USED ON	DO NOT SCALE DWG.	CUSTOMER APPROVAL		DATE		DATE		
K. TOLLIVER		2/10/92	2520								
CHECKER		DATE	WEIGHT APPROX.	CODE IDENT. NO.	DWG. NO.	DWG. NO.		DWG. NO.			
			21 LBS.	83008	D	031-5401		031-5401			
ENGINEER		DATE	SCALE	SHEET	OF 1						
			1=1	1							

The information and design disclosed herein was originated by and is the property of SACO ENERGY PRODUCTS CO., which reserves all patent, proprietary, design, manufacturing, reproduction, use and sale rights thereto, and to any article disclosed therein except to the extent rights are expressly granted to others. The foregoing does not apply to vendor proprietary parts.